

UNA Hotel Scandinavia

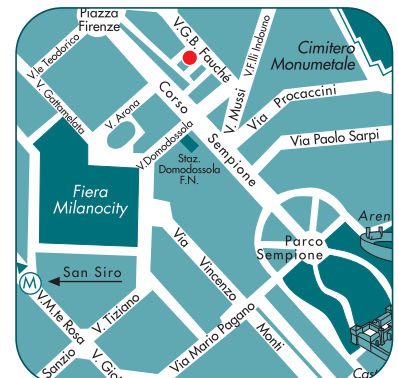


Favorito da una posizione strategica, impreziosito da rifiniture lussuose, l'UNA Hotel Scandinavia soddisfa le richieste più esigenti della clientela business. 153 camere, fitness center con sauna e 6 sale meeting in grado di ospitare fino a 170 persone. Gustosa la cucina del ristorante che dispone anche di un piacevole giardino, ideale per colazioni di lavoro, cene ed eventi all'aperto. Ampio garage a disposizione dei clienti.

Its favourable location and the precious details of its furnishings make UNA Hotel Scandinavia a place to satisfy the expectations of the most demanding business customers. It offers 153 rooms, fitness center with sauna, and 6 meeting rooms accommodating up to 170 people. The restaurant provides an excellent cuisine and its lush garden is ideal for business lunches, dinners, and outdoor events. A large garage is available for customers.



UNA HOTEL SCANDINAVIA
 Via Fauché, 15
 20154 Milano
 Tel. (+39) 02 336391
 Fax (+39) 02 33104510
 una.scandinavia@unahotels.it
 www.unahotels.it
 Numero verde - Italia
 Toll free number - Italy
 800 606162
 Numero verde internazionale
 International toll free number
 00 800 11211233 (from France - Germany - Spain - UK)



Air Terminal Malpensa Express - 1,5 km
 Air Terminal Malpensa Express - 1,5 km



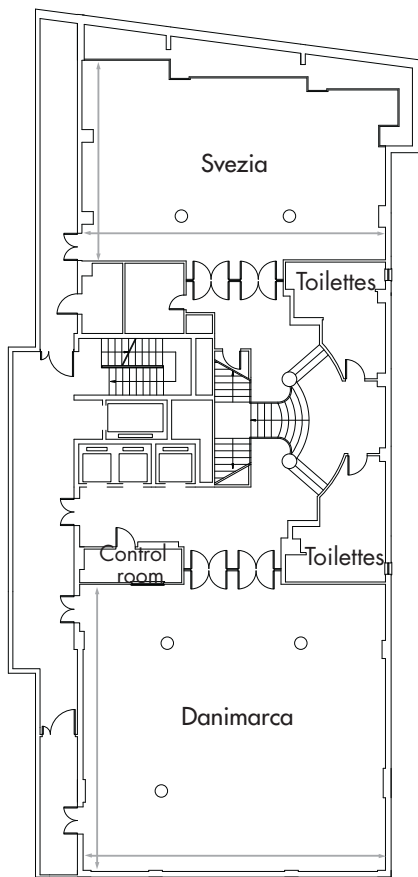
Passante ferroviario fermata Domodossola
 500 mt
 Domodossola station railway link to underground
 500 mt



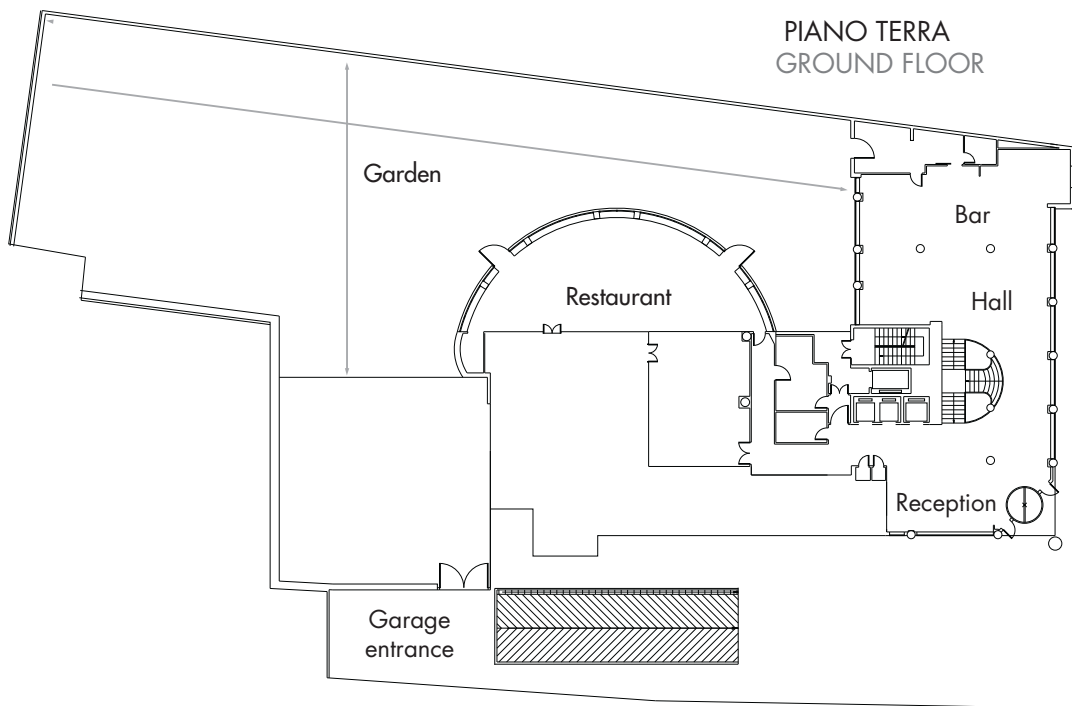
Centro città
 City centre



Fiera Milanocity - 500 mt
 Exhibition center - 500 mt



PRIMO PIANO INTERRATO
FIRST UNDERGROUND FLOOR



PIANO TERRA
GROUND FLOOR

Attrezzature standard:
Standard meeting equipment:

- Lavagna luminosa
Overhead projector
- Lavagna a fogli mobili
Flip Charts
- Schermo
Screen
- Blocco note e penna
Notepad and pen
- Hospitality desk
Hospitality desk



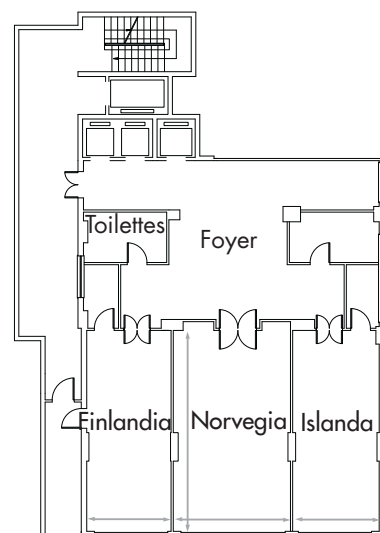
Servizi su richiesta:
Service on request:

- Servizio segreteria
Desk assistance
- Servizio hostess
Hostesses
- Traduzione simultanea
Simultaneous translation
- Fotocopiatrice, fax
Copier, fax machine
- Servizi fotografici
Photo service
- Allestimenti floreali
Flower decorations
- Assistenza Tecnica
Technical Assistance

Attrezzature su richiesta:
Meeting equipment on request:

- Videobeam
(videoproiettore collegabile a PC con grande schermo)
- Videobeam
- Videoconferenza
Videoconference
- Puntatore laser
Laser Marker
- Videoregistratore
Video recorder
- Monitor TV
TV monitor
- Schermo gigante
(a partire da 2x2 mt)
Wide screen
- Proiezione diapositive
Slide projector
- Registrazione audio
Audio recording

SECONDO PIANO INTERRATO
SECOND UNDERGROUND FLOOR



Teatro Theatre	Scuola Classroom	Tavolo a U U shaped	Tavolo unico Board room	Banchetti Banquets	Cocktail Parties	Dimensioni Dimensions	Altezza Height	Mq Mq	Porte Doors	Luce Light
-------------------	---------------------	------------------------	----------------------------	-----------------------	---------------------	--------------------------	-------------------	----------	----------------	---------------

MILANO - UNA HOTEL SCANDINAVIA

Danimarca	170	70	50	40	130	150	13,3x12,6	2,7	169,2	1,5x2,2	
Svezia	100	50	30	30	70	100	13,4x8,8	2,7	109,9	1,5x2,2	
Norvegia	40	28	25	20	36	50	5,3x9,2	2,7	49,3	1,0x2,1	
Islanda	25	18	13	16	20	30	3,9x9,2	2,7	36,4	1,0x2,1	
Finlandia	20	15	13	16	20	30	3,8x9,2	2,7	35,5	1,0x2,1	
Imperial Suite	12	8	8	10	10	10	4,0x6,0	2,7	25,0	0,8x2,2	✓
Restaurant					130	150	20,3x7,7		189,2		✓
Garden							55,0x23,0		877,0		✓