

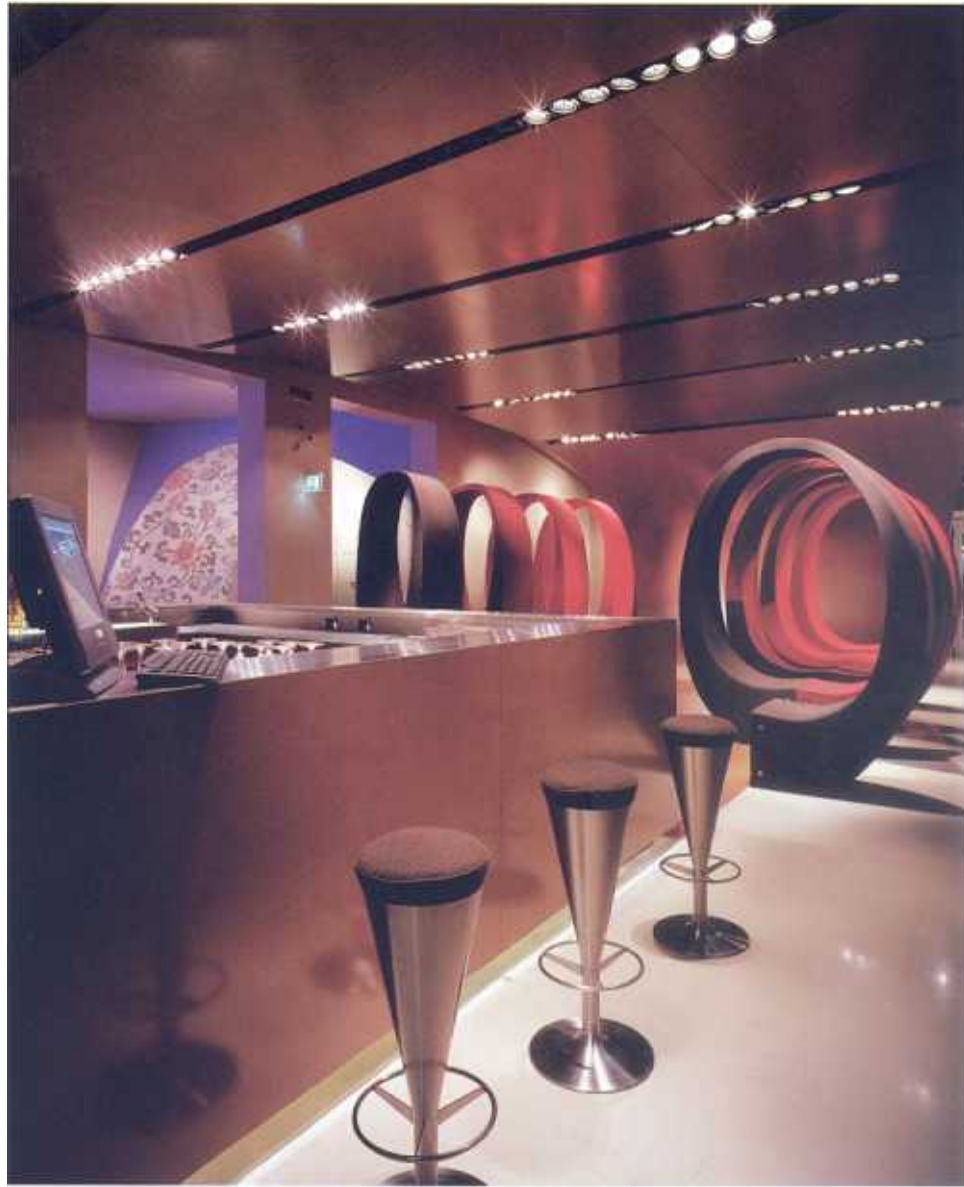
Firenze

Hotel

UNA HOTEL VITTORIA

Designer : Fabio Novembre

An old monastery was remodeled into a hi-tech inn.



B

Hotel as a "theater of life"

The UNA Hotel Vittoria, located in the historic quarter of San Frediano, rises from the masterly conversion of an industrial space by the eclectic and

unconventional architect and designer Fabio Novembre. The core concept of the UNA hotel chain is to amaze its guests and promote the idea of the hotel as a "theatre of life", a place where you not only sleep but also live and work in a

regenerating and energizing atmosphere. This was fully interpreted and expressed in Novembre's design. Throughout the hotel, an historic and artistic Florentine hospitality merges with the latest design and technology in a



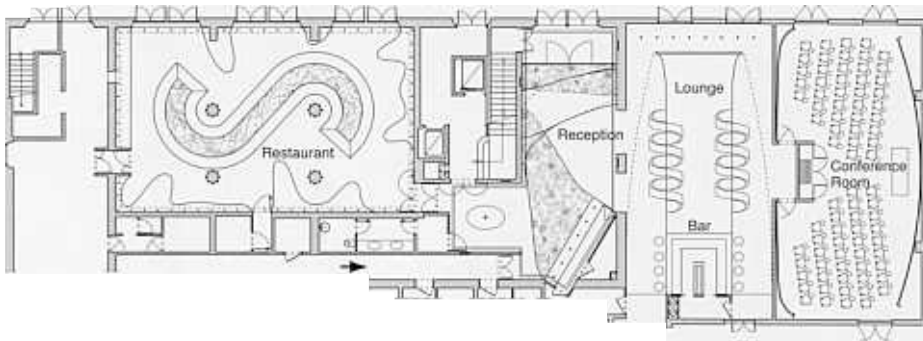
A



C

- A : The Una Hotel Vittoria viewed from the courtyard.
- B : Bar at the lounge and seating sculpture.
- C : Lounge area.
- D : The lounge area viewed across the reception.





F

E : Guest room.

F : Restaurant

ARTICLE BY YOSHIKO KASUIGA
PHOTO BY ALBERTO FERRERO

DATA

UNA HOTEL VITTORIA

Designer : Fabio Novembre
 Design Team : Carlo Formisano, Lorenzo De Nicola, Giuseppina Flor
 Contractor : Tino Sana s.r.l.
 Location : Via Pisana 59, Firenze
 Total Area : 4000m²
 Client : UNA Hotels and Resorts
 <Materials>
 mosaic tile, leather, printed lame

captivating, ironic and breathtaking harmony of shapes and colors.

Novembre was inspired by the city of Florence, the cradle of extraordinary art recognised all over the world as a substantial source of architectural innovation. Thus, he set the core concept as "technological inn".

"Life" and "Personality" characterize the space, starting from the entrance hues of purple, lilac and white. You are literally enveloped in a spiral of color and fantasy that takes you on an evocative journey through time.

The internal spaces have been divided into many independent but connected functional areas, washed with warm shades and materials such as mosaics, leather and printed lame. The public area, from the hall to the meeting room, has been transformed into the crypts of a

monastery, the traditional refuge and safe haven, open at all times for bygone travellers. And, keeping with the theme, the restaurant has become a "refectory" where center stage is taken up by a long S-shaped communal table, inviting guests to share and socialise.

